



**Luz-Mary Harris
Sculptures**

La escultura no requiere de las palabras para ser comprendida. Su lenguaje es universal porque genera formas con las mismas pautas que impone la naturaleza a todo lo que crea y con las que también estamos hechos los seres humanos.

Por eso un árbol, un animal, un río, no necesitan ser explicados, son.

-- *Leo Vinci*

To my husband, my soulmate and muse.

Front and Rear Cover
"Finding Each Other"
Aqua Resin, Bronze Patina
35 H x 42 L x 25 W Inches

Luz-Mary Harris Sculptures

A Solo Exhibition - 2018

Salmagundi Club
November 4th through 10th, 2018
47 Fifth Ave
New York, New York 10003

www.LMH-ART.com
917-254-4512

Sculptures that convey movement, action and interactions are my goal. I usually do not copy a model's pose, but adapt it to a concept, narrative and emotion from my readings and imagination.

Using representational work, mostly of the human figure, I depict relationships and interaction among individuals. The "Soulmates Series" shows couples in an embrace, reclining or in close proximity; they reflect a physical, as well as emotional closeness and connection.

Mythology provides a rich source of inspiration for my work. "Emerging", influenced by the myth of Sisyphus, shows three male figures struggling to emerge from a mountain and the sense of freedom after reaching the top. I became interested in goats after observing their engaging personalities in a farm in Vermont and researching their role in Greek mythology. The Elgin's marbles of the Parthenon sculpture, which depict Centaurus, but no Centauress compelled me to sculpt one.

Although I have always been interested in art, I took a long detour to obtain a doctoral degree in Clinical Psychology from the University of Minnesota and University of California in San Francisco before immersing myself in art full time.

Appointed to the Sausalito Arts Commission in 1999, I worked with local organizations to heighten the awareness of artists in Marin County, California and conceived and implemented a program in 2000 to revive the role of artists in Sausalito, by showcasing their work with curated exhibits at the city Hall Chambers. This exposure to art and artists provided an invaluable foundation for my artistic expression, especially, the time spent in the studio of Walter Kuhlman. He was an important figure in the Abstract Expressionistic movement in the Bay Area, and part of the "Sausalito six" comprised of Kuhlman, George Stillman, James Budd Dixon, Frank Lobdell, Richard Diebenkorn and John Hulltberg.

As co-chair of the Sausalito Woman's Club, Art Salon's fund raiser for the restoration of the club house designed by Julia Morgan, I secured participation of Walter Kuhlman as one of the featured artist. The Salon was a huge success, while raising a significant amount of money for the club, it also contributed to a revival of interest in Kuhlman's work.

Walter had a significant impact in my becoming an artist as well as Chester Arnold, a gifted painter and teacher. In 2003 we moved to Buenos Aires, where I became immersed in the very rich art scene there meeting Leo Vinci and Marina Dougliotti, prominent sculptors. Watching them produce their monumental sculptures inspired me to refocus my work on sculpture.

After returning to New York in 2010, I joined the Art Students League, and studied painting with Thomas Torak and then sculpture with Anthony Antonios.

– *Luz-Mary Harris, New York, 2018*



"Soulmates 2" - 2015
Aqua Resin with Bronze Patina
34 H x 35 L x 24 W Inches



"Soulmates 1"
Bronze
12 L x 10 W Inches

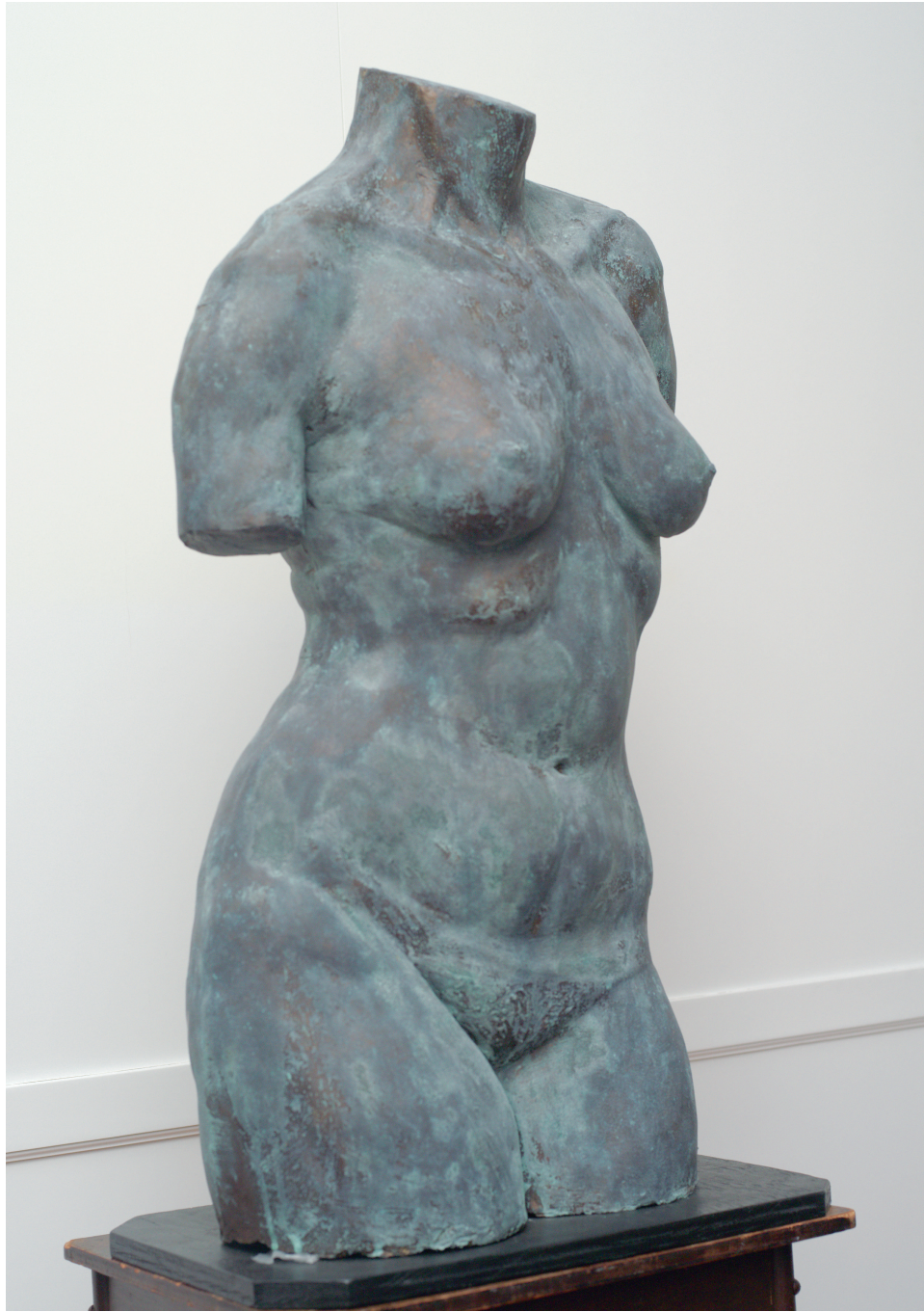




"Emerging" - 2016
Aqua Resin, Bronze Patina
59 H x 50 W x 18 D Inches



"Magda" - 2017
Aqua Resin, Bronze Patina
45 H x 22 W x 16 D Inches



"Female Torso" - 2014
Aqua Resin, Bronze Patina
33 H x 22 W x 16 D Inches



"Steve's Torso" - 1999
Bronze
14 H x 8 W Inches



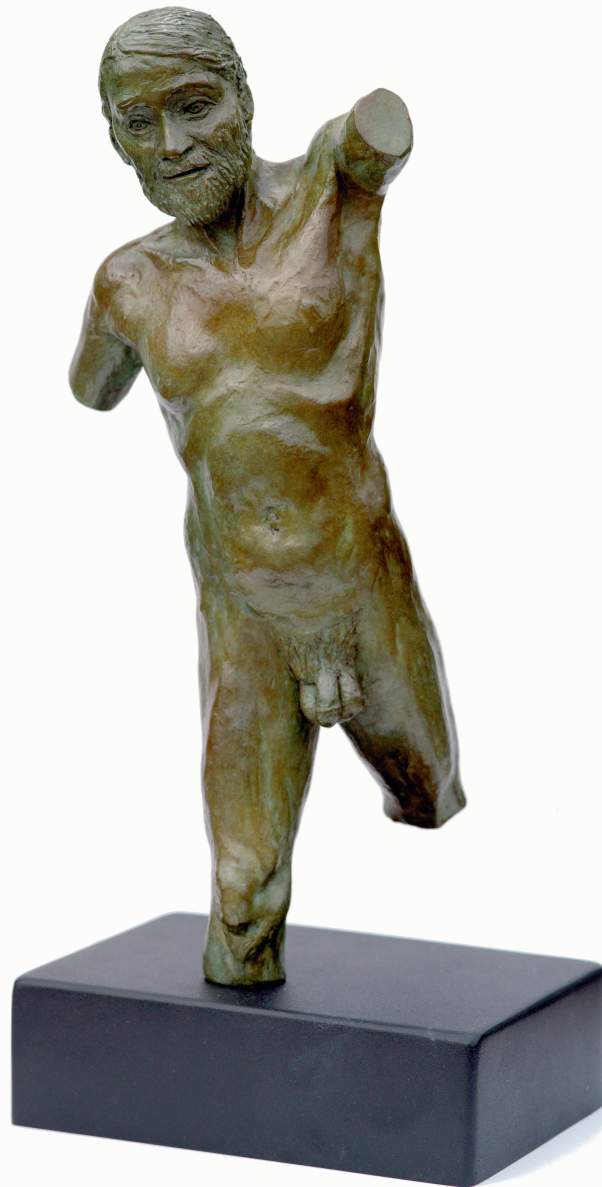
"Centauress" - 2018
Aqua Resin, Bronze Patina
42 H x 32 W x 16 D Inches



"Portrait of Emma" - 2013
Plaster, Bronze Patina
19 H x 16 W Inches



"Portrait of Cathy" - 2014
Aqua Resin, Bronze Patina
20 H x 13 W Inches



"Freddy" - 2018

Bronze

15-1/2 H x 5-1/2 W x 5-1/2 D Inches



"Ugolino" - 2013
Bronze
11 H x 13 L Inches



"Nubian Goat" - 2012

Bronze

9 H x 10 L Inches



"Autumn in Vermont" - 2014

Bonded Bronze

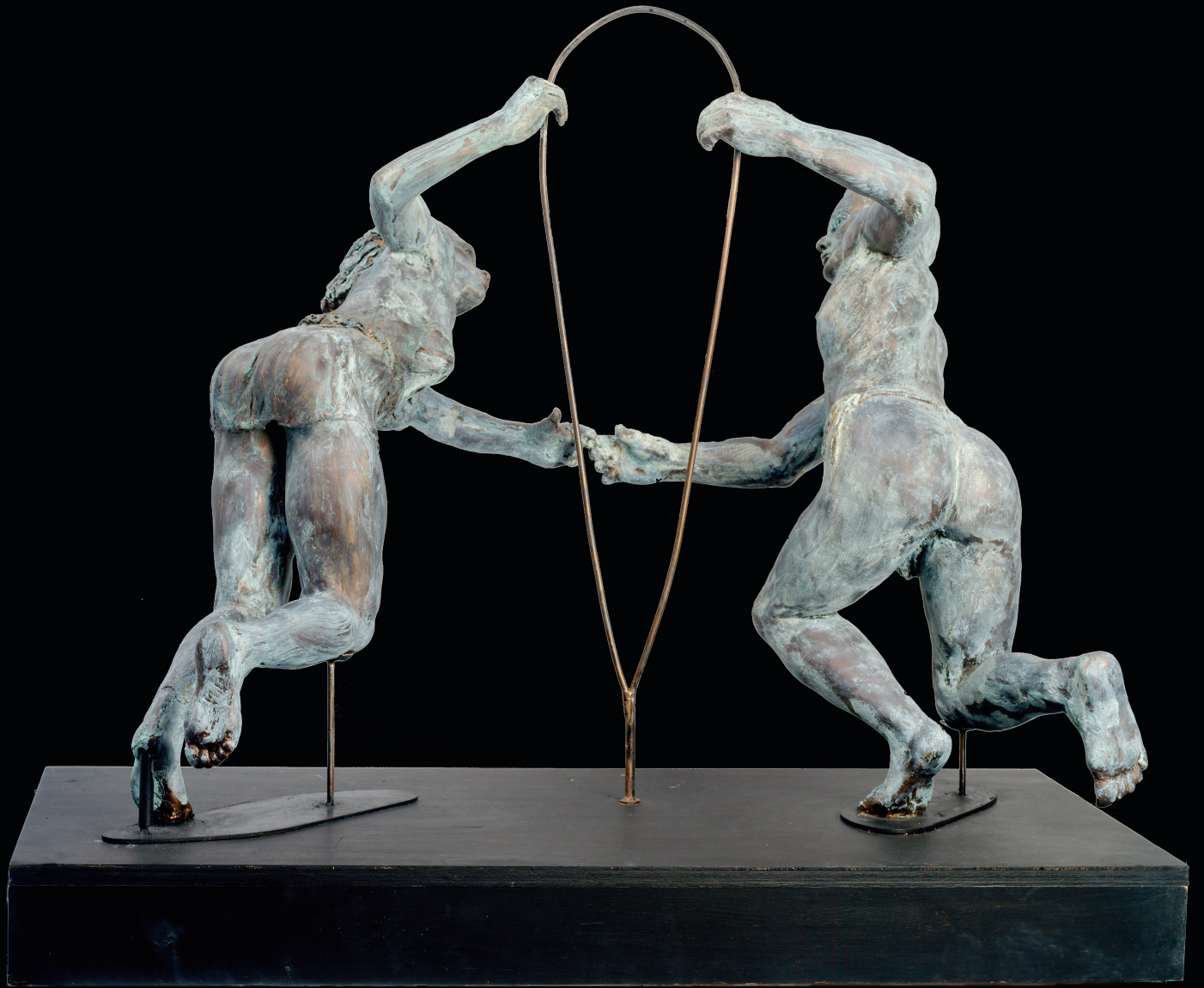
11 H x 12 W x 12 D Inches



"Teo" - 2001
Bronze
12 H x 13 L Inches

Copyright Luz-Mary Harris, 2018
LMH-ART.com
LMHAnsonia@gmail.com

Photography and Design by "Oso Graphics," dshfoto@earthlink.net



November 4th - 10th, 2018
Salmagundi Club, 47 Fifth Avenue at Twelfth Street, New York, NY